



# CHILDSPRAY

## RESOURCES



**The Big Idea:**  
Believe in Yourself

Based on the Animated TV Special

Adapted by Robert Penola

Music & lyrics by Johnny Marks

Directed by Dwayne Hartford





# Meet the Team

## Cast

Rudolph .....	Wesley Bradstreet
Sam .....	Jon Gentry
Santa Claus/Misfit Toy/Elf .....	Beau Heckman
Hermey/Young Reindeer .....	Ryan Ardelt
Clarice/Misfit Toy/Elf .....	Issie Ocampo
Coach Comet/Yukon Cornelius/Elf .....	Katie McFadzen
Donner/Misfit Toy/Elf .....	Carlos Sanchez Beltran
Mrs. Donner/Boss Elf/Misfit Toy .....	Debra K. Stevens
Mrs. Claus/King Moonracer/Young Reindeer .....	Luz Navarro
Fireball/Elf/Charlie-in-the-Box .....	Michael Bundy II
Male Swing .....	Zachary Sciortino
Female Swing .....	Jena Allen

## Creative Team

Director .....	Dwayne Hartford
Music Director .....	Bonnie Beus Romney
Choreographer .....	Ryan Ardelt with credits to Kat Bailes

## Design and Crew

Scenic Designer .....	Aaron Jackson
Costume & Puppet Designer .....	Connie Furr-Soloman
Lighting Designer .....	William C. Kirkham
Sound Designer .....	Connor Adams
Media Designer .....	Jake Pinholster
Assistant Media Designer .....	Chris Ignacio
Stage Manager .....	Kate Weir



# What the Play is About

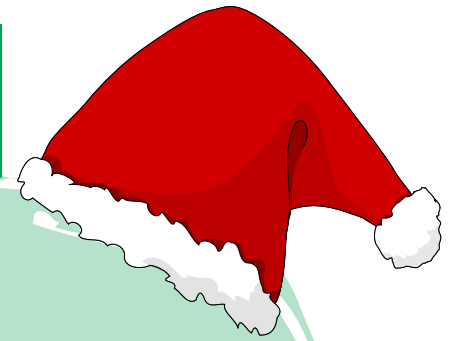
The holiday classic soars off the screen in this musical adaptation of the beloved television special. Filled with holiday hits like "Rudolph the Red-Nosed Reindeer" and "Holly Jolly Christmas," Rudolph The Red-Nosed Reindeer features all of your favorite characters including Santa and Mrs. Claus, Hermey the Elf, Bumble the Abominable Snow Monster, Clarice, Yukon Cornelius and, of course, Rudolph. It's an adventure that teaches us that what makes you different can be what makes you special.



Because of his shiny nose, Rudolph doesn't feel like he belongs in Christmastown and sets off to find a place that accepts him. Along his journey, he encounters fellow misfits, only to realize that home is where he has belonged the whole time. When a storm threatens to keep Santa's sleigh from taking flight, what makes Rudolph different turns out to be what helps him save Christmas!



# Themes of the Show



- Believe in Yourself
- Friendship
- Courage
- Embracing Uniqueness



## Talk About It!

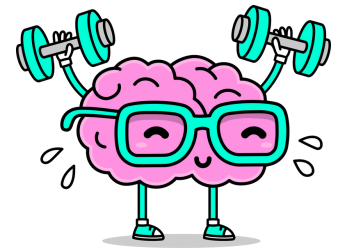
### Start a conversation before the show:

- ★ The play is based on a popular holiday television special that has been a tradition for families everywhere since it first came out in 1964. What are your favorite family holiday traditions?
- ★ Rudolph's red nose makes him unique. What does unique mean? What makes you unique?
- ★ The play takes place at the North Pole. What do you know about the North Pole? How do you think the designers will create the North Pole on a stage in a theatre?

### Start a conversation after the show:

- ★ There are 10 actors in the play and many of them play at least 3 characters! What did the actors do to make their characters different from one another?
- ★ Which characters were thought of as "misfits" in the play? How did they end up "fitting in" by the end of the play?
- ★ When the reindeer bullied Rudolph, Clarice stood up for him. Talk about a time you had an opportunity to stand up for someone being teased or left out - including opportunities to stand up for yourself.

# Discover It!

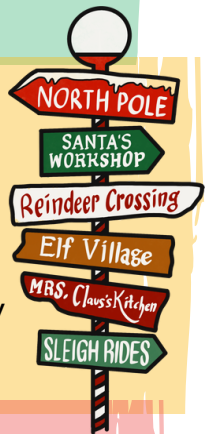


## North Pole Fun Facts

- For 6 months of the year, the North Pole is dark, and for the other 6 months it's daylight 24/7!
- The sun rises and sets on the same day only once a year
- There is a marathon held at the North Pole every few years! Do you think you could run 26.2 miles on ice?!

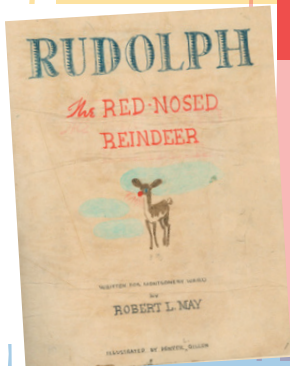
## All About Reindeer

- Today, reindeer live only in the freezing northern regions of the globe, but during the Ice Age, they lived as far south as Nevada and Tennessee!
- Some reindeer have knees that make a clicking noise as they walk, allowing the herd to stay together in a blizzard.



## Rudolph's Origins

- The story of Rudolph was written in 1939, way before it was made into a TV special or a theatrical musical.
- The original story and illustrations were created by Robert L. May and given as a book to children at the Montgomery Ward department store in Chicago.



Scan the QR code for resources connected to previous versions of Rudolph, including the original manuscript of Robert May's story and an article detailing when 1964 special will be aired on TV this year. You can also search for the film on YouTube!



## Consider This!

Compare the other versions of Rudolph to what you saw onstage:

- What was different in the play? What stayed the same?
- What did you like about the play that wasn't in the original story?
- What was something in the original story that would have been fun to include in the play?

# Create It!

## Make A Snowflake!

What you need: ★ a square piece of paper  
★ scissors

1

Start with your square piece of paper.

2

Fold the paper in half diagonally, creating a triangle.

3

Fold your triangle in half - again diagonally.

4

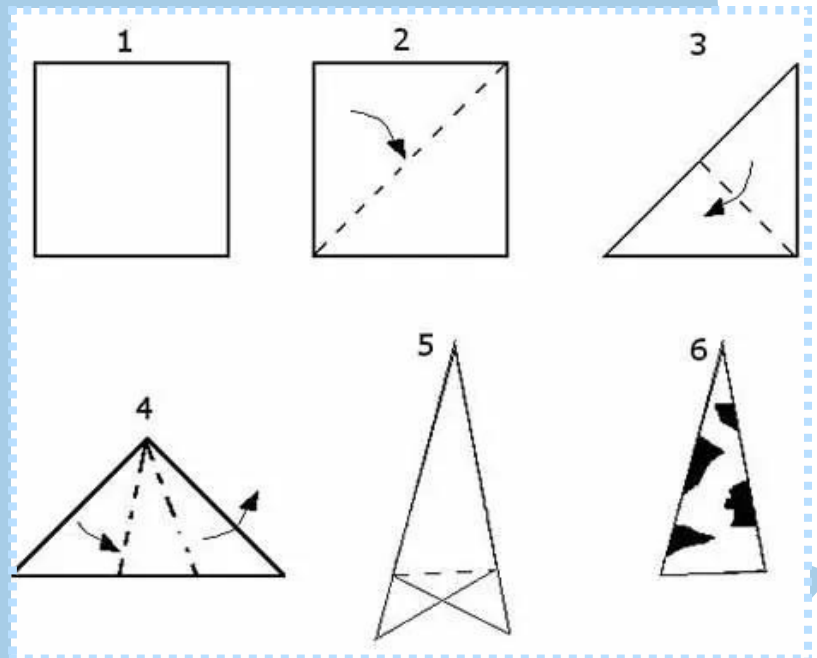
Fold the paper in thirds. Fold one side to the front, the other to the back.

5

Trim the extra piece of paper off the end of the small triangle.

6

Around the outside of your triangle, cut some designs like circles, squares, triangles, or squiggles.



Unfold your paper and see  
your snowflake creation!

# Imagine It!



## Toy Machine

The elves in Santa's workshop loved to make toys. In this game, you get to help by building a toy-making machine in Santa's workshop!

1

One student starts with a movement that is simple and repeatable, and produces an accompanying sound.

2

Once another student has an idea for how to connect to the movement and sound, they can join the machine, adding a unique movement and sound to represent the way their part works.

3

Continue adding on to the machine. Students must physically connect with another student to become a part of the machine, though they do not need to add on to the last person to join - their part can connect wherever it fits best.

4

Continue this until the whole group has joined, creating one whole machine.

### Teacher Tip:

If you have a large group, start by building one machine as a whole group to ensure that everyone understands the task, then divide into smaller groups. Encourage your groups to observe and discuss each other's machines e.g. "What do you think this machine makes?" "What might this part of the machine do?" "What makes you think that?"



# Share It!



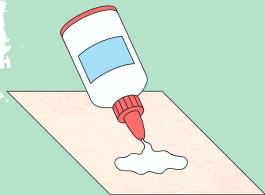
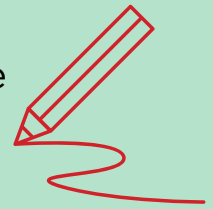
## In Your Dreams

Dreams don't just happen when we sleep; there are day dreams and life dreams too. In the play, Hermey the Elf dreams of being a dentist. Rudolph dreams of pulling Santa's sleigh. What are your dreams?

**DREAM  
BIG**

Think about a dream you have for your future. Maybe it's something you'd like to learn, or something you'd like to accomplish, or somewhere you'd like to go. Now find a way to express that artistically! You might...

Draw a picture - grab some paper and colored pencils or markers, and draw yourself into the future you'd like to see! Be sure to show on the body and face of "dream you" how it feels to accomplish your dreams.



Create a collage - gather a stack of magazines, newspapers, and photos, and cut out words and images that represent your dreams for your life. Paste them on a sheet of paper or even a canvas, arranging them in whatever way speaks to you. You can even add small objects or craft items like sequins or puff balls to make your collage 3D!

Write a poem - it can be rhyming or non-rhyming. It can follow a specific style (like a haiku or a sonnet), or be freeform. It can speak about your dreams literally or use images and emotions. Just pick up your pencil and begin!



**SHARE**



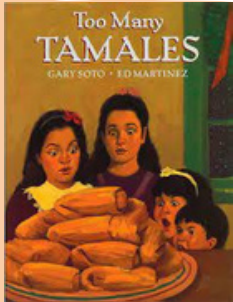
Sharing your dreams is a great first step towards making them happen. Hang your creations around the classroom or present them to each other out loud!



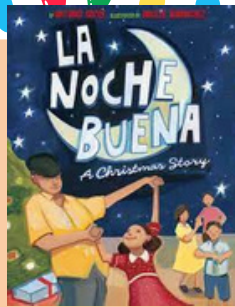
# Read About It!



Keep the conversation going! Check out this list of books connected to the ideas and themes in 'Rudolph the Red-Nosed Reindeer'!



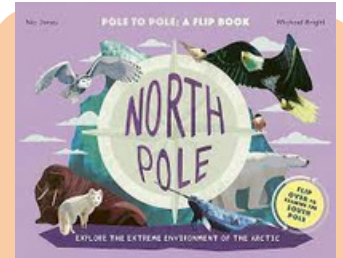
**Too Many Tamales**  
By Gary Soto  
Ages 4-8



**La Noche Buena: A Christmas Story**  
By Antonio Sacre  
Ages 4-8



**The Christmas Coat: Memories of My Sioux Childhood**  
By Virginia Driving Hawk Sneve  
Ages 5-10



**North Pole/South Pole**  
By Michael Bright  
Ages 7-11



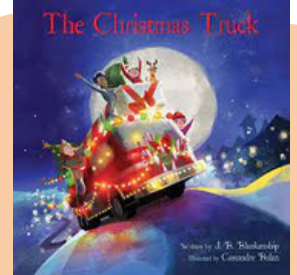
**I Got the Christmas Spirit**  
By Connie Schofield-Morrison  
Ages 3-8



**Welcome Comfort**  
By Patricia Polacco  
Ages 4-10



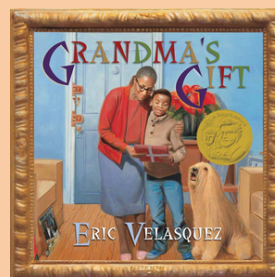
**December's Gift**  
By Ashley Smith-Santos & Stasie Bitton  
Ages 5-10



**The Christmas Truck**  
By J.B. Blankenship  
Ages 4-8



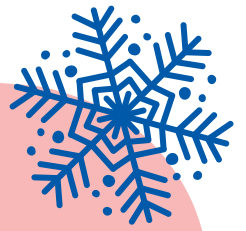
**Coyote Christmas: A Lakota Story**  
By S.D. Nelson  
Ages 6-10



**Grandma's Gift**  
By Eric Velasquez  
Ages 4-10



# Extend It!



The play is just the beginning - there's always more to learn. Scan the QR code to dig deeper into what interests you!

- ★ Explore the North Pole!
- ★ Chew on fun facts about teeth!
- ★ Dig into facts about snow!
- ★ Discover more about reindeer!



## Extend the Experience!

Bring a professional Teaching Artist to your classroom to lead an arts-based, standards-driven lesson connected to the play.

Email us at:

[CPEducation@childsplayaz.org](mailto:CPEducation@childsplayaz.org)

## #SHAREWITHUS

Follow us on social media and share your comments and photos!

[#ChildsplayAZ](#)

[#Rudolph24](#)

## About Childsplay

Childsplay is a nonprofit professional theatre company of adult actors who perform for young audiences and families.

Our Mission is to create theatre so strikingly original in form, content or both that it instills in young people an enduring awe, love and respect for the medium, thus preserving imagination and wonder, those hallmarks of childhood that are the keys to the future.

For more information:  
[www.childsplayaz.org](http://www.childsplayaz.org)

