



Childsplay presents:

Junie B in Jingle Bells, Batman Smells!

By Allison Gregory

Adapted from the books by Barbara Park

Directed by David P. Saar

Scenic Design by Carey Wong

Costume Design by Kish Finnegan

Lighting Design by Paul Black

Sound & Original Music by Robertson Witmer

Stage Manager: Sam Ries

The Cast

Junie B.	Katie McFadzen
May.	Debra K. Stevens
Mr. Scary.	Dwayne Hartford
Herb/Grandpa Miller.	Tim Shawver
Lucille/Elf Ellen.	Jodie L. Weiss
José/Mr. Toot.	Israel Jiménez
Sheldon/Phillip Johnny Bob.	Nathan Dobson

Tempe Center for the Arts
November/December, 2010

Production Support:



Arizona Commission on the Arts
Cardon Children's Medical Center
City of Tempe Cultural Services
Gene Nevitt Foundation
The Steele Foundation

About *Junie B. in Jingle Bells, Batman Smells!* and Your Theatre Experience

BROUGHT TO YOU BY



WHERE EDUCATION AND IMAGINATION
TAKE FLIGHT

We hope you find this guide helpful in preparing your children for an enjoyable and educational theatrical experience. Please return to www.childsplayaz.org and click on "360° Theatre Resource Center" for additional support materials including pre and post show discussion questions, classroom activities that deal with curriculum connections and a full lesson plan.

The Story:

Welcome to the world of Junie B. Jones, first grade, and Room One! It is the week before Christmas, and Junie B. and her classmates are excited by all the hustle and bustle of the season—the holiday sing-a-long and choosing Secret Santas. After a disastrous school-wide rendition of Jingle Bells, in which she manages to work in the lyrics "Jingle Bells, Batman Smells, P.S. so does May," Junie B. and her classmate May are told by their teacher, Mr. Scary that they must resist the temptation to call each other names and tattle on one another or face a daunting trip to the principal's office. Junie B. recalls a prior disastrous school-wide encounter with May during the Columbus Day play and the two girls agree to a shaky truce. Later that day, the students are excited to draw the names for the Secret Santa gift exchange. Only one name is left when it is time for Junie B. to draw. She is mortified to see the name on the slip of paper---"MAY." Junie B. plots to teach May a lesson by giving her a lump of coal in her gift bag, but when faced with the potential fallout of her actions, is able to truly feel the spirit of the season and give the gift she never thought possible.

Themes/Curriculum Ties:

- moral dilemma • following directions • cooperation • listening • holidays • friendship • math/money • keeping secrets • journal writing • page to stage • 6 pillars of character



About Childsplay:

Childsplay is a professional non-profit theatre company of adult actors, performing for young audiences and families.

Our Mission is to create theatre so strikingly original in form, content or both, that it instills in young people an enduring awe, love and respect for the medium, thus preserving imagination and wonder, those hallmarks of childhood that are the keys to the future.

What We Do:

In addition to our weekend public performances, we also offer three theatre experiences for our school audiences: Field Trips, School Tours and Artist in Residence Programs. Field trip performances, where students come to the theatre and see a production, can be booked by contacting Beth Olson at 480-921-5757. School Tour Performances, where we come to your school or other location and perform, can be booked by contacting Jaime Fox at 480-921-5751. Artist in Residence Programs, which can be individually designed to meet the needs of your school or can be based on one of our many existing formats (page to stage, creating original work, use of drama to teach curriculum), can be booked by contacting Patricia Black at 480-921-5750.



Our Home:

The Sybil B. Harrington Campus of Imagination and Wonder at Mitchell Park (formerly Mitchell School) is where you'll find our administrative offices, costume shop, prop shop, rehearsal spaces, and Academy classrooms. We love to hear from our audiences. Send your letters and reviews to:

Address: 900 S. Mitchell, Tempe, AZ 85281

Phone: 480-921-5700

Email: info@childsplayaz.org **Web:** www.childsplayaz.org

We perform at the Tempe Center for the Arts
700 W. Rio Salado Parkway
Tempe, AZ 85281

Theater Etiquette:

It's helpful to review the rules of theater etiquette before seeing a show, especially since this may be the first live theater experience for some of your students. Please take a moment to discuss the following pointers prior to seeing the performance:

- Use the restroom before seeing the show as we do not have intermission during our school performances.
- Stay seated during the performance.
- Be respectful to the performers and other people in the audience by not talking during the performance. Remember, the actors can see and hear the audience just like the audience can see and hear them.
- Appropriate responses such as applause or laughter are always welcome.
- Food, candy, gum and beverages are not allowed in the theater/during the performance.
- Use of cell phones (including text messaging), cameras or any other recording device is not allowed in the theater/during the performance at any time.
- Following the performance (time permitting) there will be a brief question/answer session where audience members will have an opportunity to ask the actors questions about the production.



About Barbara Park:

Born April 21, 1947 in Mount Holly, NJ, Barbara Park is one of today's funniest, most popular authors. Her series of 27 Junie B. Jones books, which began with *Junie B. Jones And The Stupid Smelly Bus*, is loved by readers of all ages. Her middle-grade novels include *Skinnybones*, *The Kid in the Red Jacket*, *My Mother Got Married (And Other Disasters)*, and *Mick Harte Was Here*. She has won numerous awards, including 25 Children's Choice awards. Barbara has two grown sons, 2 grandsons and lives with her husband and dog here in Arizona.

From Page to Stage:

The play is based on three Junie B. books: *Jingle Bells*, *Batman Smells! (P.S. So Does May)*, *Shipwrecked*, and *Dumb Bunny*. The playwright Allison Gregory worked very closely with Barbara Park to adapt the stories for the stage. Theatres like to produce adaptations because typically the plays are based on well-known books that will bring in audiences. But almost always, books are not intended to be turned into plays, and so translating them into scripts can seem unnatural or awkward. The playwright must find what is theatrical about the book and concentrate on those elements in order to create a successful adaptation. The playwright should decide who the most essential characters are, what the most essential events are, how the action and settings of the

story can be confined to the space of the stage, and if there is anything not in the book that should be in the play. Once the script is finished, the director, actors and designers work on bringing the story and characters to life. The actors, director and stage manager spend about 3 weeks in the rehearsal hall learning blocking (the movement of the actors), memorizing lines, and creating the physical and vocal qualities of the characters. At the same time the staffs of the scene shop, prop shop and costume shop are busy building sets, props and costumes and the marketing staff is hard at work advertising the show and selling tickets. The production then moves into the theater where scenery, costumes, make-up, lights and sound are added. This portion of the rehearsal process is called technical rehearsal and takes 3 or 4 days. The last addition to the process is, of course, the audience!

Preliminary costume design sketches by Kish Finnegan



Final costumes for the production (front row l to r): Katie McFadzen as Junie B.; Debra K. Stevens as May; Jodie L. Weiss as Lucille. Back row: Dwayne Hartford as Mr. Scary; Tim Shawver as Herb; Israel Jiménez as José; D. Scott Withers as Sheldon



Childsplay's 360° Theatre Resources for Schools
Who's who and Ask An Actor for
Junie B. in Jingle Bells, Batman Smells!
2010-2011 Season
www.childsplayaz.org



Nathan Dobson (*Sheldon*) couldn't be more excited to be working with Childsplay this season. After spending a year at the American Musical and Dramatic Academy in New York, he returned last year and performed at Stray Cat Theatre in *Speech and Debate* (Solomon) and *12th Night of the Living Dead* (Sir Andrew) and worked with the *Scripts on Strike* improv troupe at MCC.

Dwayne Hartford (*Mr. Scary*) first joined the company as an actor in 1990. Some of his favorite company roles are: Snail in *A Year With Frog & Toad*, Father in *The Yellow Boat*, the BFG in *The Big Friendly Giant*, the Moon in *Pero or the Mystery of the Night*, and Joseph in *Wolf Child: The Correction of Joseph*. Dwayne's plays *Eric and Elliot* (2005 AATE Distinguished Play Award winner), *The Imaginators*, and *A Tale of Two Cities* have been produced by Childsplay and published by Dramatic Publishing. His play *A Little Bit of Water* toured schools for two seasons. A regular director for Childsplay, he directed *Honus and Me*, *Busytown*, *Miss Nelson is Missing!*, *Seussical*, *Junie B. Jones* and *A Little Monkey Business* and *Petite Rouge*. Locally, he has directed for Phoenix Theatre, OperaTunity, Stagebrush, Greasepaint Scottsdale, and the Phoenix Symphony's production of *Amahl and the Night Visitors* at the Orpheum. Originally from Maine, he received his BFA from Boston Conservatory, and did graduate work in directing at Boston University. Dwayne is a Childsplay Associate Artist and Playwright in Residence.



Israel Jiménez (*José, Mr. Toot*) is delighted to be back at Childsplay for this production of *Junie B.* Previously he played Joey in Childsplay's production of *Honus and Me*, Atreyu in *The Neverending Story*, George in *Miss Nelson is Missing*, Paul/Anthony in *Alexander and the Terrible, Horrible, No Good, Very Bad Day* and Tomás in *Tomás and the Library Lady* in Childsplay's first national tour and the special engagement run at the Geffen Playhouse in Los Angeles. Other credits include: *Rent* (Nearly Naked Theatre); *Little Queen* (Teatro Bravo); *Tomás and the Library Lady* (Seattle Children's Theatre); *Procession of Nature* (Sun and Moon Ensemble of San Francisco); *Hamlet*, *Fiddler on the Roof*, *Beauty and the Beast*, *Oliver!* (PCPA Theatrefest). Israel is also a Conservatory acting teacher for Childsplay's Academy and an Acting and Directing instructor at Arizona School for the Arts. He has instructed young actors in a variety of theatre and film schools including the PCPA Education and Outreach Program, Young Actors Camp, Performing Arts Workshops Education, Inc, Greasepaint Youtheatre and Phoenix Theatre Education where he recently directed the musical productions of *The Emperor's New Clothes* and *The Jungle Book*. Israel is a graduate of the Pacific Conservatory of the Performing Arts and holds his B.A. in Theatre from the College of Santa Fe. Israel's TV/Print/Internet and Radio Commercial credits include his current position as Spokesperson for SRP.



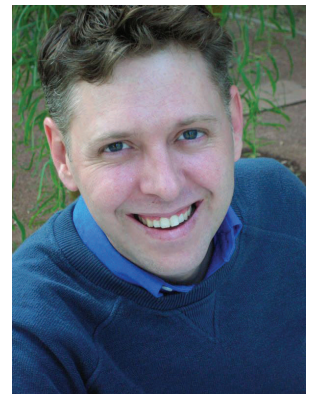
Katie McFadzen (*Junie B.*) is an Associate Artist with Childsplay and has been with the company since 1993. Favorite roles with Childsplay include: Bird/Mouse in *A Year With Frog and Toad*, Mom in *Honus and Me*, and The Queen of England in *The Big Friendly Giant*, Miss Nelson/Miss Swamp in *Miss Nelson is Missing*, Mayzie in *Seussical*, Lilly in *Lilly's Purple Plastic Purse*, Goose in *Charlotte's Web* and Aunt Patti in *Getting Near to Baby*. Other Phoenix credits include *Speech and Debate* for Stray Cat Theatre, *Little Queen* for Teatro Bravo, *The Women and Something's Afoot* for Phoenix Theatre, *The Pursuit of Happiness* and *Parallel Lives: The Kathy and Mo Show* for Actors Theatre and *How the Other Half Loves* for Arizona Theatre Company. Katie holds a BFA in Acting/Directing from the University of Wisconsin, Whitewater and an MFA in Theatre for Youth from ASU. In addition to acting and teaching, Katie also helps create Childsplay's Resource Guides connected to the productions.

Debra K. Stevens (*May*) is an Associate Artist who has been with Childsplay since 1982, and is reprising the role of May in *Junie B Jones: Jingle Bells, Batman Smells!* Last season, she also played Sophie in *The BFG* and Ms. Young in *Honus and Me*. Other favorite roles include: Lucy Wainwright in *Getting Near to Baby*, Mme. Defarge in *A Tale of Two Cities*, Charlotte in *Charlotte's Web*, Stacy in *Lost and Foundling*, Nurse and other roles in *Romeo and Juliet*, Annabelle in *Still Life With Iris*, Joy in *The Yellow Boat*, Helen Keller in *The Miracle Worker*, and Emily Dickinson in *The Belle of Amherst*. Debra spoke several of Shakespeare's most famous monologues as the Narrator for Center Dance Ensemble's *Hamlet* last fall, and portrayed Claire in Nearly Naked Theatre's production of *Fuddy Meers* in the spring. Other roles for theatres outside of Childsplay include Essie in *You Can't Take It With You* for Phoenix Theatre. For Actors Theatre she portrayed Nat in *Rabbit Hole*, Sister Woman in *Cat on a Hot Tin Roof*, Maya in *The Archbishop's Ceiling*, and Karen in *Dinner with Friends*. She will be directing the perfect American play, *The Crucible*, for Mesa Community College opening in January of 2011. Debra is on the Arizona Commission on the Arts roster as an Artist-in-Education. She received a BA in Speech and Theatre from Western Kentucky University and a Master's in Theatre from ASU.



Jodie Weiss (*Lucille*) has worked with Childsplay on and off for over 25 years. Past Childsplay shows include *Ozma of Oz*, *Mythic Proportions*, *The Little Prince*, *Beauty and the Beast*, *Goodnight Moon*, *Busytown*, *Seussical*, *Bunnicula*, *Sleeping Beauty*, and *Junie B Jones*. Outside the Childsplay walls she has had the pleasure of performing in such productions as; *Annie*, *Guys and Dolls* at Starlight Musical Theater; *The Diviners*, *Sugar*, *They're Playing our Song* and *Dracula-the Musical* at La Jolla Stage Company; *Dames at Sea* at the Oregon Cabaret Theater; *A Tale of Two Cities* at the San Diego REP; and various roles in *The White Rose*, *Cowgirls* and *The Snowball* at The Old Globe Theater. Also, *How to Succeed in Business* at the Scripps Ranch Theater where she won an Aubrey award for her performance. Jodie has two wonderful teen-aged boys and a very supportive husband, all three keep her happy and grateful!

Tim Shawver (*Herb, Grandpa Miller*) is a Phoenix native and played the Coach in last season's *Honus and Me*. Previously he played Huckle the Cat in *Busytown*. He made his first appearance with Childsplay as Gaspard in the world-premiere production of *A Tale of Two Cities*. His Valley acting credits include work with Actors Theatre (*The Lieutenant of Inishmore*), Theater League (*West Side Story*), Phoenix Theatre (*Six Degrees of Separation*), Arizona Jewish Theatre Co., Southwest Shakespeare, Nearly Naked Theatre and Blackball Ensemble.



Ask An Actor!

Just like Junie B. in the Columbus Day play, every actor has to start somewhere. We asked the cast of *Junie B. in Jingle Bells*, *Batman Smells!* to tell us about their very first performance:

Nathan Dobson (Sheldon, Philip Johnny Bob): My first performance was when I was six in the class play, *The Three Billy Goats Gruff*. I played the littlest, most scared goat and, to be perfectly honest, I was really scared myself – but I had an absolute blast. I even got to wear fake horns and a goatee!



Katie McFadzenas Junie B. and Tim Shawver as Grandpa Miller

Dwayne Hartford (Mr. Scary): My first play was *Marvin Mouse* in which I played the title character. This was in third grade. My only memory of the play is putting on the black yarn whiskers in the boys' room with my friends Mike Quimby and Timmy Mosher.

Israel Jiménez (José/Mr. Toot): The first play I was in was *Snow White* when I was 8. It was in my backyard and I was Prince Charming. The girl playing Snow White demanded that I kiss her at the end. I was so afraid of kissing her that Prince Charming never appeared to save Snow White!

Katie McFadzen (Junie B.): The first play I remember was *Hansel and Gretel* when I was in third grade. I played the mother. I remember hearing the audience laugh and feeling pretty darned good about myself.

Tim Shawver (Herb/Grandpa Miller): In 8th grade I played the "New Kid" in school in a show called *Teen II: the musical* (think 1988's *High School Musical*). I sang a song called "Who Am I Anyway?" My mom likes to show the video. If she ever learns how to use YouTube it could end my career.

Debra K. Stevens (May): Although I remember doing many choreographed, lip-synched performances with my sister in the backyard and our classrooms (*My Fair Lady* was a hit!), I seem to remember my first full length play as being *Wilber, the Wonder Rabbit* in 4th grade. I played Wilber and my Dad built me a killer pair of rabbit ears attached to a favorite headband that got a great deal of admiration from all my classmates. We didn't spend much rehearsal time on the 2nd act, but it went really well anyway. Apparently, I USED to be able to improvise!

Jodie Weiss (Lucille/Elf Ellen): My first play was in the first grade at Loloma Elementary School, Scottsdale, AZ (No longer exists - I was the last graduating class). It was the Christmas/ Holiday play. I was child #8, and my line was "...well, not for the last two weeks." referring to how long it had been since we had done something bad - or "un-Santa" worthy!!



Questions to Ask Before Seeing *Junie B. in Jingle Bells, Batman Smells!*:

- 1) Junie B. has a hard time following the rules. There are times that she does follow the rules even when she doesn't want to. What do you do to make yourself follow rules even when you don't want to?
- 2) Junie B.'s school has a tradition of Secret Santas. What are some other holiday traditions? What's your favorite holiday tradition and why?
- 3) Junie B.'s imagination wanders and takes her into some daydreams. Do you ever daydream? When? Where does your mind go?
- 4) What do you write about in your journal? Do you keep your thoughts private or do you share them with others?
- 5) How many Barbara Park books have you read? Can you figure out how many books she has written in her career?
- 6) What kinds of school performances have you been in? How did you feel before the performance? After?
- 7) Because of Denise Brunkus's fabulous illustrations, we have a vivid picture of what Junie B. and her school mates look like. How do you think the characters will look in the play?

Questions to Ask After Seeing *Junie B. in Jingle Bells, Batman Smells!*:

- 1) At the end of the play, Junie B. has to make a very important choice. What does she decide and why do you think she chose to do what she did?
- 2) At the end of the play, we get the feeling that May and Junie B. might actually get along and be friends. What happened in the story to help us believe this? Do you think they'll become friends or do you think they'll fight again? Why?
- 4) Junie B. tells the story of what happened in her journal. How do you think May would tell the story from her point of view?
- 5) Lucille often talks about being rich. What does it mean to be rich? Does being rich only have to do with money and material things?
- 6) The class in Room One uses teamwork to create their Columbus Day play. What happens when a member of the team doesn't play by the rules?
- 7) May "tattles" on Junie B. When is it alright to tell on someone and when it is better to just leave things alone?
- 8) Junie B. pulls on May's sweater and ruins the sleeve. How does that make May feel? Have you ever had someone disrespect one of your personal belongings? How did you react? How did it make you feel?



Minute Activities:

5

1) Storytelling usually happens in a linear way (in the order of events as they

happen) as opposed to jumping back and forth in time. The play happens in a non-linear way. With a partner, take turns telling a story about what happened to you yesterday but don't tell it in the linear order of events. Tell it according to the most interesting thing that happened to you, followed by the next most interesting thing, and so on.

Writing: G2: S1: C2: PO2, Organize in a logical sequence

2) Junie B. always reminds May about the "B" in her name. She also tells May that "B" stands for blabbermouth. Alone or in pairs, take 5 minutes to write down as many "B" words as you can think of.

Writing: G2: S2: C4: PO2, Word Variety

3) Junie B. is not allowed to use the word "hate" in Mr. Scary's classroom. Come up with a list of other words that Junie B. could use instead of "hate." **Writing: G2: S2: C4: PO2, Word Variety**

4) Journal Entry Prompts:

• Write about a time that you had to perform in front of a group of people. How did you feel? Did things go as rehearsed?

• Junie B.'s favorite toy is Philip Johnny Bob. Write about a favorite toy. Do you talk to your toy?

• Write about the best present you ever gave to someone. How did it make them feel? What about the best present you ever received. How did it make you feel?

Writing: G2: S3: C1: PO1, Personal Narrative

Minute Activities:

15

1) Divide into pairs and create a short scene where Junie B. is trying

to convince Grandpa Miller to give her five dollars. What are the many ways Junie B. can talk Grandpa Miller into giving her money? Make sure your scene has dialogue as well as a beginning, middle and end. Rehearse it several times and then share with the class.

Theatre: Beginning: S1: C2: PO2, Scene Work

2) Sometimes Junie B. has a hard time following the rules at home and in school. What are some of the rules she breaks? If Junie B. had her way, what would her rules be? Come up with a list of Junie B.'s Top Ten Rules. Decorate and post around the classroom.

Writing: G2: S3: C3: PO1, Write Classroom Rules

3) Junie B. experienced many emotions during the play (anger towards May, excitement about the Squeeze-a-Burp). How many emotions can you remember? Write them down. Actors communicate emotions using voice, body and imagination. Communicate your list of emotions by using just your face and body. Next, choose a sentence from a Junie B. book. Explore saying the sentence in different ways to communicate different emotions (say it as if you are surprised, happy, angry, etc) while also using your body and face. Take turns saying the sentence in front of the class and see if the other students can guess which emotion is being communicated.

Theatre: Beginning: S1: C2: PO101, Movement and Gesture

Minute Activities:

30

1) Junie B. has an imaginary friend in Philip Johnny Bob. He is a

stuffed elephant who lives in Junie B.'s room and gives her advice. Using colored pencils or crayons, and a large sheet of paper, create a portrait of your very own imaginary friend complete with name, age, and a description of his/her personality. What kind of advice would your imaginary friend give you? Share with the class.

Visual Art: Intermediate: S1: C4: PO201, Explain purposeful use of themes, symbols and subject matter in artwork

2) Denise Brunkus does all of the illustrations for the Junie B. Jones series. An illustration is a frozen picture that communicates a moment in a story. Choose one or more characters and a moment in a scene from any of the Junie B. stories and create your own illustration of it. Post in your classroom or hallway.

Visual Art: Intermediate: S1: C4: PO101, Use subject matter in artwork

3) As a class or in teams, find a scene (or chapter) from one of the Junie B. stories that the play was based on that you can bring to life. Talk about people, place and problem, then decide who will play the characters. Next, play out the scene making sure it has a beginning, middle and end. Run through the scene a few times and then share with the class or another audience.

Theatre: Beginning: S1: C2: PO102, Sustain a scene



Childsplay's
360° Theatre Resources for Schools
In-Depth Standards Based Lesson Plan for
Junie B. in Jingle Bells, Batman Smells!
2010-2011 Season
www.childsplayaz.org

A Character Choice: The Holiday Spirit of Giving

Target Grades: 2-5

Lesson Overview:

Students will explore different attitudes about friendship and the holiday spirit of giving by using tableaux and other drama devices focused on their own understanding of the six pillars of character.

Length of Lesson: 45-60 minutes

Instructional Objectives:

- Students will explore their own attitudes on the concept of holiday spirit, giving and of peace and goodwill.
- Students will use their own judgment to make calls about moral dilemmas involving friendship.
- Students will come to a better understanding of how to use the six pillars of character in their own lives.

Arizona State Standards:

Theatre-Intermediate: S1:C3:PO 205. Construct or locate appropriate props to enhance a scene or production.

Theatre-Intermediate: S1:C2:PO 202. As a character, play out her/his wants by interacting with others, maintaining concentration, and contributing to the action of classroom improvisations (e.g., scenes based on personal experience and heritage, imagination, literature, and history).

Grade 3-Social Studies: S3:C4:PO 3. Identify traits of character (e.g., honesty, courage, cooperation, respect, trustworthiness, responsibility, citizenship) that are important to the preservation and improvement of democracy.

Supplies:

Construction paper, crayons or markers, scissors, pieces of crumpled black construction paper representing a lump of coal, one for half the number of students in the class

Instructional Plan:

Warm-Up:

Begin the lesson by asking students about what one thing (a gift) they wish to receive during the holiday season. Provide construction paper, crayons or markers and scissors for each student. They will then create this item out of the given materials (more may be provided if you'd like). If a student's wish is for a something large like a bike or a dog, ask them to scale it down so that it can be handheld. If it is something abstract like wishing to end world hunger, the student may draw what this means to them or may write a letter explaining their wish. After students are done constructing their items, they may get up out of their seats and show their item to other students explaining what it is and why they really want it.

Target Activity:

After show and tell of their items, put students into pairs and ask each

pair to find their own space in the room. Tell the students that they are to pretend the person who they are in the pair with is their worst enemy, someone who they don't get along with at all, like Junie B. and May in the play. Ask students to create one tableau (frozen picture or snapshot), using their bodies that shows how these two characters feel about each other. All pairs will create their tableaux at the same time using a countdown from three and the cue of "freeze." One side of the room will unfreeze to look at the other which is still frozen and then switch so the second side freezes and the first side gets to look. After both sides have shown their tableaux, indiscriminately go to each pair taking one person's item and giving the person who still has their item a piece of crumpled black construction paper, representing a lump of coal. Explain to the class that the person with both their own item and the coal now has a big decision to make; they have to decide whether to give their own special item to their enemy or whether to give them the coal. If they decide to give them their own item, they don't get that item back and if they give the coal that is the only item the other person will receive. To help students decide, line students with the items up in a single file line. Students without items will split into two even groups and will form two lines facing each other with a path down the middle, almost as if they are the walls of a narrow hallway. Ask students without the items to think of things they'd like to say to the person who is making the decision that will help them to decide, i.e. "How would you like to get only a lump of coal?" or "I still don't want to be your friend." They don't all have to be nice, but they shouldn't be out of the bounds of school rules either. Students with the items will walk down the "hallway" one at a time and the students on either side will say their ideas to them. Once everyone has made it down the hallway, students will go back to their original pairs where they will make the decision. Once the decision is made they will create a final tableau that shows their decision. Present these in the same way as the first tableaux.

Assessment:

- Ask students, those who made the decision and those who didn't, to explain their choices and why they made them. Ask this question about what they said in the "hallway", the choices to they made in their tableaux or the final decision of giving the gift or the coal.
- Have a discussion about the choices that Junie B. had to make in the play *Junie B. in Jingle Bells, Batman Smells!* and how they mirrored the choices students made.
- Cite the six pillars of character and ask which ones they might have used to come to the decision they made.

Extensions:

- Students will write a letter explaining some of the good and bad things they have done this year and why they should or shouldn't get the present they wished for.
- Students will research an organization that they can donate to this holiday season and present their information to the class. Perhaps even choose one charity and collect donations from your class for that organization.

Sources:

- The Six Pillars of Character Online at <http://charactercounts.org/sixpillars.html>
- Online database of non-profit organizations. Students can type in their zip code and keyword, like animals or children, and it generates a list of registered non-profits in the area. <http://www.volunteermatch.org/search/orgs.jsp>

Author: Rachel Hamilton, Teaching Artist



Holidays

Auntie Claus: Home for the Holidays by Elise Primavera
Book Fiesta! Celebrate Children's Day/Book Day by Pat Mora
Judy Moody and Stink: The Holly Joliday by Megan McDonald
Junie B., First Grader: Boo! And I Mean It! By Barbara Park

Moral Dilemma

Stars and Sparks on Stage by Sharon M. Draper
I Did It, I'm Sorry by Caralyn Buehner

Friendship

Abigail Iris: The One and Only by Lisa Glatt
Abigail Spells by Anna Alter
Archie and the Pirates by Marc Rosenthal
Bella and Bean by Rebecca Kai Dotlich
Best Friends and Drama Queens by Meg Cabot
Best Friends for Frances by Russell Hoban
A Birthday for Bear by Bonny Becker
Junie B., First Grader (At Last!) by Barbara Park
Junie B. Loves Handsome Warren by Barbara Park

Journal Writing

More Perfect than the Moon by Patricia MacLachlan
Junie B., First Grader: Aloha-Ha-Ha! by Barbara Park
Junie B., First Grader: Shipwrecked by Barbara Park

Math/Money

How Many? How Much? by Rosemary Wells
A Dollar for Penny by Julie Glass
The Case of the Shrunken Allowance by Joanne Rocklin
Monster Money by Grace Maccarone

Keeping Secrets

Zelda and Ivy Keeping Secrets by Laura McGee Kvasnosky

Listening

Quiet Bunny by Lisa McCue
City Lullaby by Marilyn Singer
Listen, Buddy by Helen Lester

Cooperation

No Girls Allowed (Dogs Okay) by Trudi Strain Trueit
Elvis the Squirrel by Tony Bradman
Two Heads are Better Than One by Anne Mazer

All materials are available through your local library.
Check 'em out!

Interesting Internet Links:

www.randomhouse.com/kids/junieb
-Junie B.'s official website

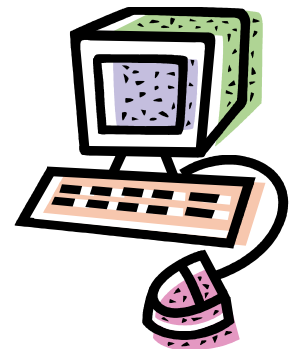
www.randomhouse.com/teachers/authors/results.pperl?authorid=23194
-an interview with Barbara Park

http://journalbuddies.com/c-Journaling/writing_prompts_for_kids.htm
-prompts for journal writing

www.gigglepotz.com/writingone.htm
-monthly writing calendars to encourage daily writing

www.randomhouse.com/teachers/junieb/guides/guide_jingle.html
-lesson plan and activities connected to the book *Jingle Bells, Batman Smells!* (P.S. So Does May.)

www.childsplayaz.org
-Childsplay's website complete with photos, teaching resources and other information connected to our productions





Childsplay's 360°
Theatre Resources for Schools
Student Pages for:

Junie B in Jingle Bells, Batman Smells!

By Allison Gregory

Adapted from the books by Barbara Park

Directed by David P. Saar

Scenic Design by Carey Wong

Costume Design by Kish Finnegan

Lighting Design by Paul Black

Sound & Original Music by Robertson Witmer

Stage Manager: Sam Ries

The Cast

Junie B. Katie McFadzen
May. Debra K. Stevens
Mr. Scary. Dwayne Hartford
Herb/Grandpa Miller. Tim Shawver
Lucille/Elf Ellen. Jodie L. Weiss
José/Mr. Toot. Israel Jiménez
Sheldon/Phillip Johnny Bob. Nathaniel Dobson

Tempe Center for the Arts
November/December, 2010

Production Support:



Arizona Commission on the Arts
Cardon Children's Medical Center
City of Tempe Cultural Services
Gene Nevitt Foundation
The Steele Foundation

Today you saw a production of *Junie B. in Jingle Bells, Batman Smells!*, performed by Childsplay at the Tempe Center for the Arts. Here are some things to think about and some activities to do now that you've seen the show!

Tell your family and/or friends about the play!

- Who were the characters? Which character was your favorite and why? What did the characters do? Was there a character that you disliked? Why? What was your favorite part of the play? Can you remember something that made you laugh out loud?

- Talk about the costumes, scenery, props, and music that were used in the production. Draw pictures to help describe the different costumes and scenery.

Try these activities:

*The play is based on three Junie B. books: *Jingle Bells, Batman Smells! (P.S. So Does May), Shipwrecked, and Dumb Bunny*. Read these books. Which chapters are included in the play?

*Create your own journal by using the cover design on the last page of this guide. Think of words that you could use to keep people from looking inside your journal (stop, private, do not enter, etc). Write those words in the shapes on the cover. Color the rest of it. Add a few more blank sheets of paper to the journal, then fold and staple it into a book. Write in your journal for 5 minutes a day.

*Junie B. comes up with some not so nice lyrics to "Jingle Bells" about May. How do you think May would change the words to "Jingle Bells" to be about Junie B. Write them down and share with a friend or family member.

*Junie B. tells the story and writes her journal entries from her point of view. How would May tell the stories about Junie B. from her point of view? Write a journal entry as May, writing about something that happened with Junie B.

We love to hear from our audiences. Send your letters, pictures and/or reviews to:

Childsplay
900 S. Mitchell
Tempe, AZ 85281

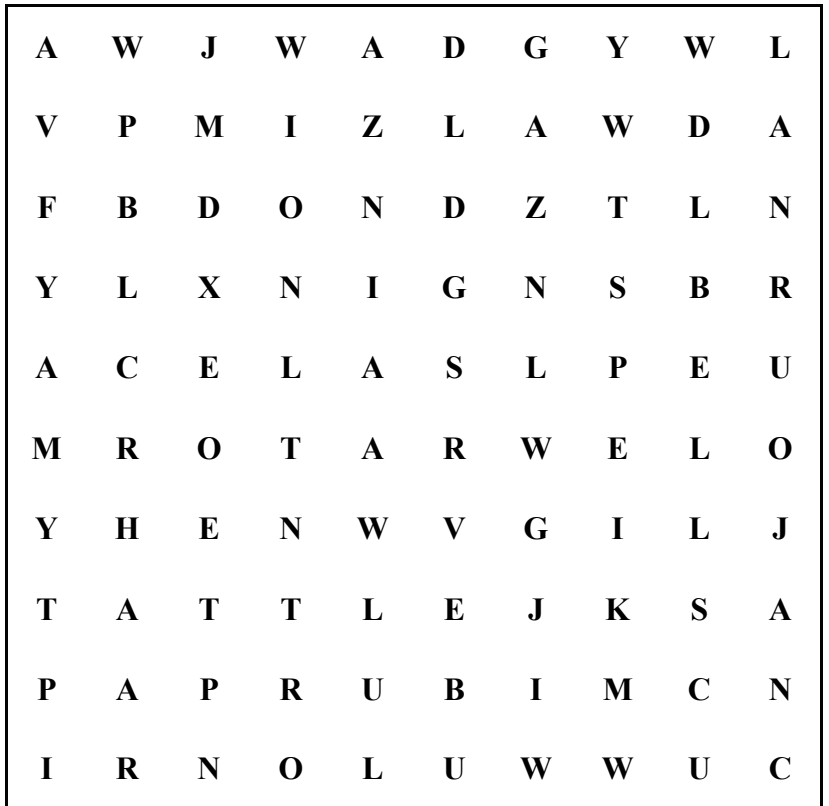
Or you can email us: info@childsplayaz.org

For more information about Childsplay you can go to our website: www.childsplayaz.org

Find these hidden words in the puzzle to the right. Words can be backwards, diagonal, across, up or down.

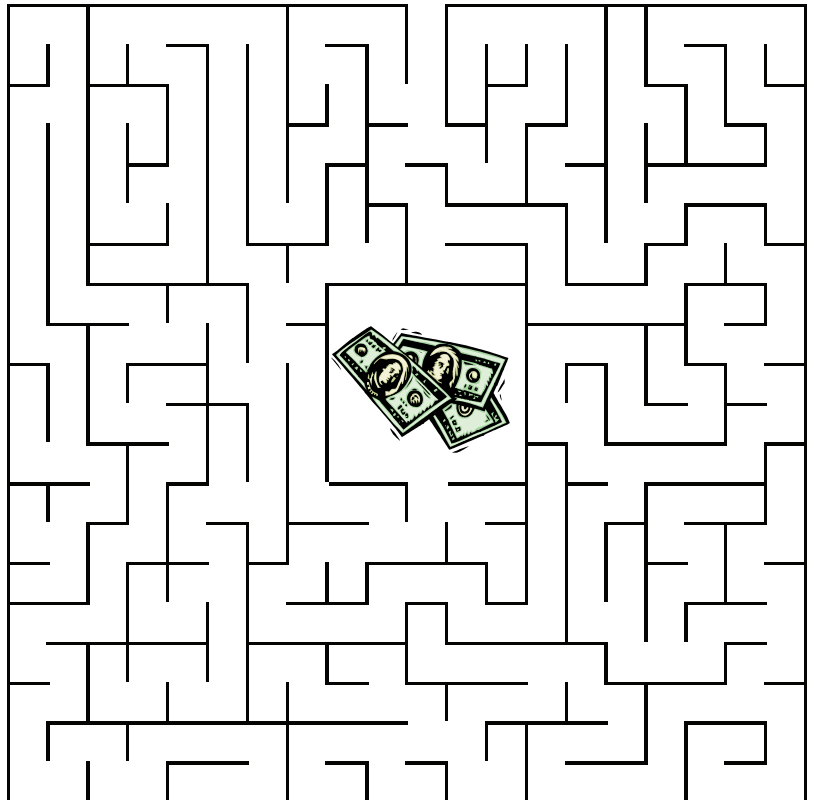


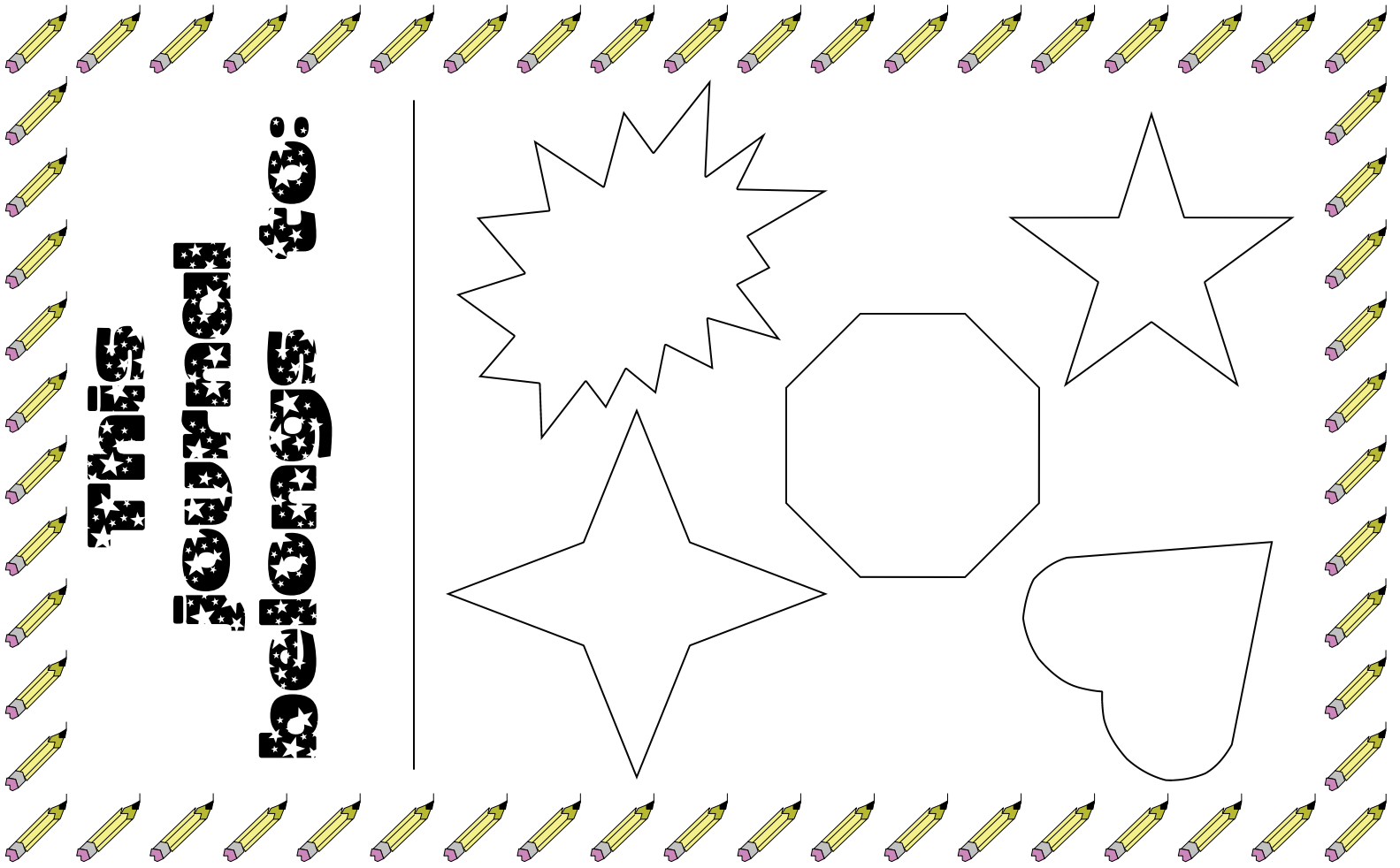
BELLS
BURP
GRANDPA
JOURNAL
TATTLE
ELF
HOLIDAY
JINGLE
MAY
SANTA



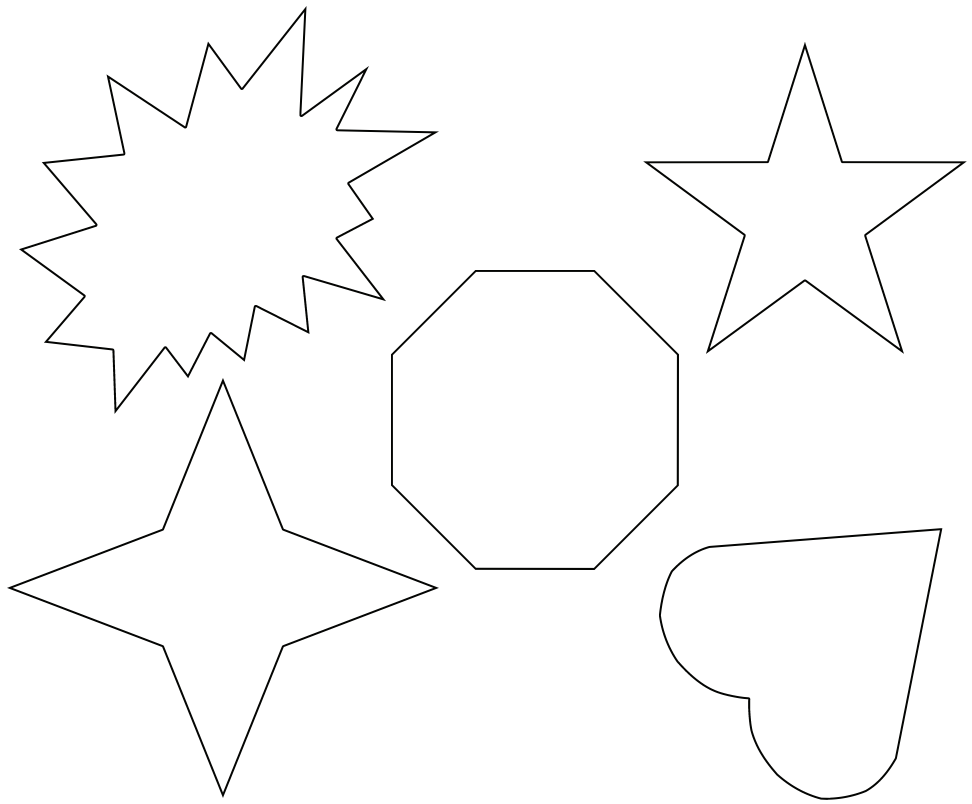
May has a habit of not saying the “B” in Junie B.’s name. Junie B. reminds her that “B” stands for words like “box” and “blockhead.” How many “B” words can you think of? Write them on the lines below:

Help Junie B. find some extra bucks for the Holiday Gift Shop!





Things Belong To:



Fold and Staple Here

