

**CHILDSPLAY THEATRE PRESENTS**

# RUDOLPH THE RED-NOSED REINDEER™

*Adapted by Robert Penola, based on  
the animated TV special*

**Music and Lyrics by: Johnny Marks**

**Directed by: Dwayne Hartford**

Music Director: Dr. Randi Rudolph

Choreographer: Kat Bailes

Costume Designer: Connie Furr

Lighting Designer: William Kirkham

Associate Lighting Designer: Kara Ramlow

Projection Designer: Jake Pinholster

Assistant Projection Designer: Chris Ignacio

Scenic Designer: Aaron Jackson

Sound Designer: Connor Adams

Stage Manager: Phoenix Jacob

---

**NOVEMBER 19 - DECEMBER 24, 2022**

**Herberger Theater Center - Stage West**

*Season Sponsor*

**BILLIE JO  
HERBERGER**

*Storybook Preview Sponsor*



*Media Sponsor*



*Production Sponsor*



**Running Time: 60 MINUTES**

---

# Welcome!

## Dear Childsplay Friends,

**Dreams can come true.** Whether you are a young music maker who dreams of creating her own sound, a reindeer who dreams of being accepted for who he is, a boy who dreams of creating his own stories, a girl who dreams of being not only the best hula-hooper, but also the best friend and neighbor, or any one of us who dare to dream of a bright future, your dreams can become reality.

At Childsplay, when we put together a season, we think about all the children in our audiences. What are their dreams? What are their stories? How can we give voice to their hopes, their fears, and their dreams? While it is of course impossible to tell everyone's story in a single season, or in a lifetime, we believe sharing different stories opens our eyes to the beautiful diversity in the world, and in that diversity, we share a common humanity that is to be honored and celebrated. And who doesn't love a good story?

Thank you for joining us as we dream of a brighter tomorrow for all of us. Your support enables us to do this challenging and rewarding work. We wouldn't be here without you!

Dreams are powerful. So, we encourage you to dream - and then go out and make that dream a reality. It is our hope that the stories we tell on our stages and the lessons we teach in the classroom reveal the power in every child to dream and to succeed.

Welcome to our 2022-2023 season. Being here with you has been our dream, and dreams can come true.

**Dwayne Hartford**, *Artistic Director*

**Steve Martin**, *Managing Director*

**Matthew Benjamin**, *President, Board of Trustees*

*Childsplay acknowledges that modern-day Phoenix, including the Herberger Theater Center, sits on the traditional lands of the Akimel O'odham (Pima) and the Tohono O'odham and before that their ancestors (Hohokam) as well as the Pee-Posh (Maricopa). This place where we live and work has been and continues to be the home of indigenous peoples since time immemorial. Our desert metropolis exists today thanks to the ingenuity of these people in creating a vast system of irrigation canals.*

## THE CAST

*Donner/Charlie-in-the-Box/Misfit Toy/Elf* .....Frederick Alphonso  
*Mrs. Claus/King Moonracer/Young Reindeer* .....Luz Navarro  
*Hermey/Young Reindeer* .....Ryan Ardelt  
*Sam* ..... Jon Gentry  
*Coach Comet/Yukon Cornelius/Elf* ..... Katie McFadzen  
*Clarice/Misfit Toy/Elf* ..... Issie Ocampo  
*Mrs. Donner/Boss Elf/Misfit Toy* .....Debra K Stevens  
*Rudolph* .....Thomas (Tommy) Strawser  
*Fireball/Elf/Misfit Toy* ..... Brandon Brown  
*Santa Claus/Misfit Toy/Elf* .....Beau Heckman



**Beau Heckman** (*Santa Claus et al.*) is happy to be returning to Childsplay with *Rudolph The Red-Nosed Reindeer*.

Beau has also been seen in Childsplay's productions of *Ella Enchanted: The Musical* and *Old Jake's Skirts*. Beau was last seen in Fagenelli and the King for Southwest Shakespeare Co. Credits include: Legends of: The Werewolf (actor, writer, and creator), Twelfth Night, The Comedy of Errors, Othello, Hysteria, Macbeth, and Equivocation (Southwest Shakespeare Company), The Holiday Extravaganza and The Phantom of the Melodrama (The Great American Melodrama in Oceano,

CA), Dream a Little Dream, Les Miserables, Guys and Dolls, The Producers, Cabaret, and Joseph and the Amazing Technicolor DreamCoat (Phoenix Theatre), Old Jake's Skirts (Childsplay), A Christmas Carol, and The Lieutenant of Inishmore (Actors Theatre of Phoenix).



**Brandon Brown** (*Fireball et al.*) is ecstatic to be joining the Childsplay team for *Rudolph the Red Nosed Reindeer!*

Having grown up going to their shows as a child, it feels like a dream come true for him to be in one. Brandon graduated from Grand Canyon University with a degree in Theatre and Drama. He was most recently on stage in *Something Rotten!* at The Phoenix Theatre Company. Some of his other favorite credits include: *Sondheim on Sondheim* (Phoenix Theatre Company), *Crutchie in Newsies* (Phoenix Theatre Company),

*Toad in A Year with Frog and Toad* (Grand Canyon University), *Hugo/ Frederick* in *Ring Round the Moon* (Grand Canyon University), and *Baby John* in *West Side Story* (Hale Centre Theatre). Brandon would like to thank his family and friends for their constant support and endless love.

(Continued)

## THE CAST *(Continued)*

---



**Debra K. Stevens** (*Boss Elf, et al.*) is an Associate Artist who has been with Childsplay since 1982, where her acting credits include *Charlotte's Web*, *The Miraculous Journey of Edward Tulane*, *Pandora's Box*, *Still Life with Iris*, *The Yellow Boat*, *The Belle Of Amherst*, *The Miracle Worker*, *A Tale of Two Cities*, and more. She just performed for the first time with Black Theatre Troupe as Marie in *Barbeque*. Other acting credits include *It's Only a Play*, *Calendar Girls*, and Dr. Ruth in the one-woman show *Becoming Dr. Ruth* (TPTC); *Next Fall*, *Rabbit Hole*, and *The Archbishop's Ceiling* (Actors' Theatre); and *Fuddy Meers* (Nearly Naked Theatre). Debra has directed world premieres of *Junie B Jones is Not a Crook*, *The Smartest Girl in the World*, *The Girl Who Swallowed a Cactus*, and *Girls Who Wear Glasses* (Childsplay). Most recently she directed *Always...Patsy Cline* for The Phoenix Theatre Company and has directed extensively around the Valley for Theatreworks, GCU, MCC, Greasepaint, and The Bridge Initiative. Debra holds a Bachelor's degree from Western KY University and a Master's degree from ASU.

---

**Frederick Alphonso** (*Donnor, et al.*) is a multi-hyphenated creative artist and award-winning playwright, award-winning Creative Director and arts educator, that has officially relocated to the Valley. Frederick is excited to be bringing you joy this holiday season! Favorite past credits include: *And In This Corner: Cassius Clay* (Childsplay), *Five Guys Named Moe*, *The Color Purple* (Revival Theater Company), *Ain't Misbehavin'*, *American Son*, *Dear America*, *The Wiz*, *Hashtag Who's Next The Musical*, *Legends Black Choreographers Edition*, *H2\$, Dreamgirls*. Frederick would like to thank his Family, The Collective, close friends and his Phoenix Family, along with the entire creative team at Childsplay. John 14:12

---

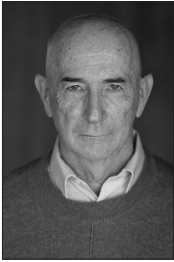


**Issie Ocampo** (*Clarice et al.*) is thrilled to join Childsplay in their winter production of *Rudolph The Red-Nosed Reindeer*. Previous performances include Cathy in *The Last Five Years* (United Colors of Arizona Theatre), Cheryl in *Evil Dead the Musical* (Brelby Theatre), and Nina in *In The Heights* (Desert Foothills Theatre). Issie is a part of the Lin-Manuel Miranda Family Fellowship as of 2021—dedicated to supporting emerging artists from communities that are

---

underrepresented. She was fortunate to attend a semester at the National Theatre Institute in the fall of 2020. She would like to give a huge shout-out to her family and friends for their endless love and support!

---



**Jon Gentry** (*Sam The Snowman*) just celebrated his fortieth anniversary as Childsplay ensemble member. Childsplay shows include *The Yellow Boat*, *A Year with Frog and Toad*, and *Charlotte's Web*. During the pandemic, he appeared on screen in schools across the state in *SEEN*. Jon spent six months in residency in the Netherlands when the Childsplay show *Scissors, Rock, Paper* was reimagined as the Dutch play *Stein, Papier, Schaar*. He recently returned from a stint with the Magik Theatre in San Antonio, where he both acted and directed. Jon has performed in *Angels In America*, Parts 1 and 2, *The Producers* and *The Pillowman*. In 2009, Jon was awarded a Lunt/Fontanne Fellowship.

---



**Katie McFadzen** (*Yukon Cornelius et al.*) is an Associate Artist at Childsplay and has been with the company for 29 seasons. Selected acting credits include: *The Very Hungry Caterpillar*, *The Miraculous Journey of Edward Tulane*, *Ella Enchanted*, *Flora & Ulysses*, *Seussical*, *The BFG*, *Getting Near to Baby* (Childsplay), *Always...Patsy Cline*, *Mamma Mia*, *Bloody, Bloody Andrew Jackson*, *The Women* (Phoenix Theatre), *Good People*, *The Pursuit of Happiness*, *Parallel Lives: The Kathy and Mo Show* (Actors Theatre), *How the Other Half Loves*, *The Great Gatsby*, a one-woman version of *A Christmas Carol* (Arizona Theatre Company & Childsplay), *Barbecue*, *Rasheeda Speaking*, *The Wedding Band* (Black Theatre Troupe), *Small Mouth Sounds*, *The Year of the Rooster* (Stray Cat Theatre). Katie received a BFA in Acting/Directing from the University of Wisconsin-Whitewater and a MFA in Theatre for Young Audiences from Arizona State University. She is a Faculty Associate in ASU's Sandra Day O'Connor College of Law where she co-teaches Persuasive Speech. @ms.katie.mcf

(Continued)



*imagine*

**FOREVER**

LEAVE A LEGACY TO CHILDSPLAY



**“THERE’S ALWAYS TOMORROW FOR DREAMS TO COME TRUE.”**

**We dream of a future where all children can  
experience imagination and wonder.**

Help make this dream come true by becoming a member of Imagine Forever. Including a gift to Childsplay in your will or estate planning is an easy way to provide Arizona children the chance to experience joy, learning, and the magic of theatre – now and in the future.



To learn more, contact Ernesto Ortiz, Director of Development, at (480) 921-5762 or visit [childsplayaz.org/imagineforever](http://childsplayaz.org/imagineforever)

## THE CAST *(Continued)*

---



**Luz Navarro** (*Mrs. Claus, et al.*) is thrilled to return to the Childsplay stage! Previous credits include: *Selena Maria Sings* (Childsplay/Magik Theatre); *Rudolph The Red-Nosed Reindeer*, *Dreamers*, *The Book of Dragons* (Childsplay Theatre); *The Hello Girls* (Phoenix Theater), *Antigone at the Border* (Borderlands Theatre/Teatro Bravo), *Little Women* (Arizona Regional Theatre), *In The Heights* (Mesa Encore Theatre), *Return To Rosie's Pub* (Brelby Theatre Company) and *In The Heights* (Desert Foothills Theater).

---



**Ryan Ardel** (*Hermey, et al.*) is thrilled to be joining the cast of *Rudolph* for his debut at Childsplay! Ryan graduated from Grand Canyon University with a BA in Theatre and a minor in Dance. He has performed all around the Valley. Some of his favorite credits include: Rolf in *The Sound of Music*, Ensemble/Don Lockwood Understudy in *Singin' in the Rain*, Ensemble in *Something Rotten* (The Phoenix Theatre Company), Sammy Splitsole in *Tappy the Elf* (Tap 24.7), Albert/Bill in *Newsies* (Hale Centre Theatre), and Mrs. Bumbrake in *Peter and the Starcatcher* (GCU). When he is not performing, Ryan also teaches dance and composes music. Ryan would like to thank Dwayne Hartford, and the cast, crew, and entire creative team for the wonderful memories as well as God, his family, and his fiancé for their unconditional love and support.

---



**Tommy Strawser** (*Rudolph*) began working with Childsplay in 2013 and is excited to reprise the role of Rudolph this year! Other acting highlights include Connor (*Suzette Who Set To Sea*), Wilbur (*Charlotte's Web*), Ulysses (*Flora & Ulysses*), Caterpillar (*Wonderland*), Tooth Fairy (*Goodnight Moon*), and Scott (*Apollo: To the Moon*). Tommy is also behind the scenes at Childsplay as Music Director for *Tomás and the Library Lady*, the national tour of *Snowy Day*, Assistant Music Director for the national tour of *Go, Dog, Go!*, and composed the music for *Seen*. Tommy is involved in other Valley arts organizations including Arizona Opera, Phoenix Theatre Company, Showtune Productions, and Detour Company Theatre. He is also a professional singer with the Grammy-Award winning Phoenix Chorale and staff singer at Pinnacle Presbyterian Church. Tommy holds a Master of Music degree in Opera/Musical Theatre Performance from ASU, and a Bachelor of Music in Vocal Performance from West Chester University of Pennsylvania.

*(Continued)*



**RUDOLPH THE RED-NOSED REINDEER  
SONG LIST**

*Overture*

*A Holly Jolly Christmas*

*Jingle, Jingle, Jingle*

*We Are Santa's Elves (Instrumental)*

*We're a Couple of Misfits (Intro)*

*Jingle, Jingle, Jingle (Reprise)*

*There's Always Tomorrow*

*We're a Couple of Misfits (Continued)*

*We Are Santa's Elves*

*We're a Couple of Misfits*

*Fame and Fortune*

*Entr'acte*

*Silver and Gold*

*The Most Wonderful Day of the Year (The Island of Misfit Toys)*

*There's Always Tomorrow (Reprise)*

*The Snowstorm*

*We Are Santa's Elves (Reprise)*

*A Holly Jolly Christmas (Reprise)*

*Rudolph the Red-Nosed Reindeer*



## THE CREATIVE TEAM

---

**Dwayne Hartford** (*Director/Childsplay Artistic Director*) moved to Arizona in 1989. He answered an ad in the paper for an acting job. That job was for Childsplay. In 1992, he originated the role of the Father in Childsplay's world premiere production of *The Yellow Boat*. Dwayne has directed many shows for Childsplay, including: *Ella Enchanted*, *The Phantom Tollbooth*, and *Flora & Ulysses*. The first play he wrote, *Eric and Elliot*, received the 2005 Distinguished Play Award from the American Alliance of Theatre & Education (AATE). *The Miraculous Journey of Edward Tulane* received the same award in 2018. Dwayne's plays have been produced professionally around the country including Seattle Children's Theatre, Dallas Children's Theatre, Chicago Children's Theatre, and South Coast Repertory. Dwayne became Childsplay's Artistic Director in 2016 upon the retirement of his mentor, the founder of the company, David Saar. Dwayne holds a BFA in musical theatre from the Boston Conservatory. He did graduate work in directing at Boston University. He is from the very small town of Smithfield, Maine.

**Dr. Randi Rudolph** (she/her) (*Music Director*) is a music director, collaborative pianist, and conductor who recently received her DMA in Conducting at Arizona State University. She works as a music director of musicals and operas throughout the country, and she has performed at The Phoenix Theatre Company, Red Mountain Theatre, and Moonlight Stage Productions. She received the Louis J. Sudler Prize in Music for conducting and was named a semi-finalist in the national American Prize competition for her work in musical theater conducting. As a teacher and educator, Randi has a private vocal coaching, audition prep, and piano studio. She holds a MM in Opera and Musical Theater Conducting from Ithaca College and a BA in Music from Stanford University. See more at [www.randiellenrudolph.com](http://www.randiellenrudolph.com)

**Kat Bailes** (*Choreographer*) is thrilled to celebrate the holidays with Childsplay! A born-and-raised Arizonan, and graduate of ASU and AMDA, Kat performs and choreographs at theaters all around the Valley. She last appeared at Childsplay as Olive in *Ella Enchanted* and as a Squirrelle in *Elephant & Piggie's "We Are in a Play!"* Other recent productions she has performed in or choreographed include: *The Rocky Horror Show* (Phoenix Theatre), *American Psycho* (Stray Cat Theatre), *The Toxic Avenger* (Mesa Encore Theatre), *The Wild Party* (A/C Theatre), *A Chorus Line* (Theater Works), *Hands on a Hardbody* (Arizona Broadway Theater), and *Bullets Over Broadway* (Phoenix Theatre). When not on stage, she can be found recommending books as the librarian at Lookout Mountain Elementary in North Phoenix.

**Connie Furr** (*Costume Designer*) Returning to Childsplay, her theatre credits include: *The Christians* (Brooklyn Academy of Music, Playwrights Horizon, Mark Taper), *Six Humana Festivals* and *Macbeth* (Actors Theatre of Louisville), *Beauty and the Beast*, *Seussical*, and *101 Dalmatians* (premiere, Children's

(Continued)

## THE CREATIVE TEAM *(Continued)*

---

Theatre of Charlotte), *Othello* and *Henry the 4th* (Georgia Shakespeare Festival); *Sun Serpent* (premiere), *Wonderland: Alice's Rock & Roll Adventure*, and *Goodnight Moon* (Childsplay Theatre), *The Nearly True Story of the Mamas and Papas* (premiere, Phoenix Theatre Company), *Seven Seasons* (Palm Springs Follies). Opera: *Pique Dame* (Syracuse Opera), *La Cenerentola* and *Fidelio* (Orlando Opera). Television: *Salsa*. Exhibitions: 2003, 2007 Prague Quadrennial, 2005 USITT World Stage Design, and 2015 Bakhrushin Museum, Publishing: *Liberace*, *Extravaganza!*

**William Kirkham (Lighting Designer)** Previously at Childsplay: *Ella Enchanted: The Musical*, *Flora and Ulysses*, *The Yellow Boat*, *Pete*, and many others. Regional Credits include: Alliance Theatre, Arena Stage, Arizona Theatre Company, ArtsWest Playhouse, Chicago Shakespeare Theatre, Chicago Children's Theatre, Cincinnati Playhouse in the Park, Contemporary American Theater Festival, Lookingglass Theatre Company, The Hypocrites, Portland Center Stage, Sideshow Theatre Company, Steppenwolf Theatre Company, South Coast Repertory, and the Utah Shakespeare Festival. His work has received Joseph Jefferson and Suzi Bass Awards. When William is not making art, he is training for triathlons, and teaching at Lighting at Arizona State University.  
wckirkham.com

**Kara Ramlow (Associate Lighting Designer)** is excited to return to Childsplay for this Holiday treat of a show. Previous Childsplay credits include: *Maddi's Fridge*, *Tomás and the Library Lady*, *Interrupting Vanessa*, and *The Grumpiest Boy in the World*. Other designs include: *The Elaborate Entrance of Chad Deity* (Chance Theater), *Gunmetal Blues*, *21 Chump St.* (A/C Theater Company), *Quilters*, *The Cradle Will Rock*, *Curse of the Starving Class*, and *Jungal Book* (SU Main Stage), and *Three by Tennessee* (SU Black Box Players). She is currently the Lighting Supervisor at South Coast Repertory and has a BFA with a concentration in lighting design from Syracuse University.

**Jake Pinholster (Projection Designer)** Associate Professor of Media Design and Associate Dean at the ASU Herberger Institute for Design and the Arts, head of design training program specializing in projection and media design for performance. Founding Director of the ASU Media and Immersive Experience Center. Childsplay: *Chato's Kitchen*. Broadway: *The Pee Wee Herman Show*. Off-Broadway: *Escape from Bellevue*, *Boozy* (LFC). New York: *David Dorfman Dance's underground* (BAM), *Hoover!*, *Dance Dance Revolution*, *HeddaTRON* (LFC), *Dixie's Tupperware Party*. Regional: *Most Beautiful Home Maybe* (Mixed Blood), *Riders of the Purple Sage* (AZ Opera), *Bloody Bloody Andrew Jackson* (Center Theater Group), *Current Nobody* (La Jolla Playhouse, Woolly Mammoth Theatre Company). TV: *Carrie Fisher: Wishful Drinking* (HBO), *The Pee Wee Herman Show* (HBO).

**Chris Ignacio (Assistant Projection Designer)** is a Filipino-American theatre artist, musician, puppeteer, producer and educator. He has toured nationally

---

and abroad since graduating from The Boston Conservatory at Berklee, and is currently pursuing an MFA in Theater/Interdisciplinary Media from ASU's Herberger Institute of Design and the Arts. He recently worked as a puppeteer in *Madama Butterfly* at The Metropolitan Opera in New York, and is currently working on a digital puppetry performance anchored around the phenomenon of the human voice. He has worked for Childsplay as the Media Designer for *Tomás and the Library Lady*, and is excited to work on *Rudolph* again this year!

**Aaron Jackson (Scenic Designer)** has been designing for Childsplay for many years. Some of his favorite designs include *Ella Enchanted*, *Wonderland: Alice's Rock & Roll Adventure* and *Robin Hood*. Other area credits include *Once*, *Hedwig & the Angry Inch*, *Rent*, *Bloody Bloody Andrew Jackson*, and more for the Phoenix Theatre Company. Aaron spent 14 seasons as the Resident Designer for *Shakespeare by the Sea* in Los Angeles and has designed for numerous cruise lines including Holland America Line, Celebrity, Oceania and Regent. He was a Design Producer for the final season of *Extreme Makeover: Home Edition* (ABC) and worked as a Layout Designer for *Star Wars: A Galactic Extravaganza* at Disney Hollywood Studios (Orlando, FL). Aaron is a co-founder of 2 Creative Entertainment and most recently he created and directed *Soulbound*, *Voodoo Moon* and *Rio Carnival* for Carnival Cruise Lines which can be found on numerous ships in their fleet including the brand-new Carnival Celebration. Aaron holds a MFA from Rutgers University. Websites: [ajacksondesigns.com](http://ajacksondesigns.com); [2CreativeEntertainment.com](http://2CreativeEntertainment.com)

**Connor Adams (Sound Designer)** has been working as a Sound Designer and Engineer in the Valley and nationwide for over a decade. He aims to bring an elevated sense of musicality and intelligibility to the work that he creates and is thrilled to be making theater again. Some of his proudest work includes engineering/mixing *A Christmas Carol* (Childsplay, 2020) and designing/mixing *The Addams Family*, *The 39 Steps* (Fort Peck Summer Theatre), and *35mm* (Arizona State University).

**Phoenix Jacob (Resident Stage Manager)** is a Stage Manager and Theatrical Technician based in Phoenix, AZ. He joins Childsplay as Resident Stage Manager this season, after managing past productions of *Eric & Elliott* (2020), *Rudolph the Red-Nosed Reindeer* (2021), and *The Very Hungry Caterpillar* (2022). He received his Bachelor's degree specializing in Design/Technical Theatre from Bowling Green State University in 2017, and during that time was awarded three certificates of merit from the KCACTF for his work as Stage Manager on *Middletown* (2016), *The Drowsy Chaperone* (2016), and *Twelfth Night* (2017). He was also granted the 2017 Outstanding Senior Award in Theatrical Production. He pursued a Master of Arts in Theatre from Bowling Green State University in 2018-19, where his research focused on transgender theatre and adaptations of Shakespeare for contemporary cultural contexts,

(Continued)

## THE CREATIVE TEAM *(Continued)*

---

before relocating to the Phoenix area in 2019 to pursue stage management full-time.

**Robert Penola** (*Playwright*) For more than 25 years, Bob has been in the business of show. After touring the world as a performer, Bob settled in NYC and was accepted into the prestigious BMI Lehman-Engel Musical Theatre Workshop as a lyricist. While there, he wrote many adaptations for children's stories which toured extensively with American Family Theatre (Philadelphia). A proud member of the SDC, Bob naturally brings theatrical storytelling to any project he touches, and has helped transform corporate events into moving experiences—as a result, Bob has conceived, created and directed literally hundreds of corporate meetings, events, product launches and commercial theatrical productions for a wide variety of satisfied clients, including Oprah Winfrey (LIVE YOUR BEST LIFE Tour). In addition to his corporate work, Bob is an award-winning playwright. His musical revue *Heartbeat It's a Lovebeat* won the Bistro Award in NYC as Outstanding Musical Revue, and played to sold-out houses in NYC and London for over three years. Bob has also created and directed custom musical shows for Regent Seven Seas and Seabourn luxury cruise lines, and for Busch Gardens, Opryland and SeaWorld Entertainment theme parks. Bob's favorite project has been adapting and bringing to life the beloved holiday classic *Rudolph The Red-Nosed Reindeer* on stage as a live musical. Bob splits time, on or near the water, between NYC, NJ and Brazil, from which his partner Oswaldo hails.

**Gail Wolfenden-Steib** (*Costuming and Wardrobe Director*) - Gail's design and construction work has been seen on numerous stages around the Valley since 1994, including Childsplay's production of *Schoolhouse Rock Live!* last season. She is an award-winning theatrical costume designer and technician. Gail has also been Resident Costume Designer for Stageworks at the Mesa Arts Center, Phoenix Theatre, and Phoenix Theatre's Cookie Company over the years. Last summer marked her 23rd season as the costume painter/dyer for the Tony Award Winning Utah Shakespeare Festival. When not working at Childsplay, she can be found teaching as an adjunct faculty member at Mesa Community College.



**COMING SOON**



**WEEKENDS AT HERBERGER THEATRE CENTER**  
**February 4, 2023 - March 12, 2023**

Tickets: [www.childsplayaz.org](http://www.childsplayaz.org)

## CHILDSPLAY LEADERSHIP

---

**Steve Martin** (*Managing Director*) is in his 22nd season as Managing Director at Childsplay. During this time, the company has moved into the Sybil B. Harrington Campus for Imagination and Wonder; secured significant ongoing funding from the US Department of Education for arts education programming and research throughout the metro Phoenix area; received funding from national foundations including the Hearst Foundation, Doris Duke Charitable Trust, and the Shubert Foundation; received substantial support from local foundations including the Legacy Foundation, Virginia G. Piper Charitable Trust, The Flinn Foundation, Steele Foundation, and the Helios Education Foundation; and produced more than 35 world premieres. He is a native of Toledo, Ohio, and a graduate of the University of Toledo. Martin is currently on the board of East Valley Partnership and formerly served on the boards of Arizona Citizens for the Arts (past President), TYA/USA - the national organization for theatre for young audiences and LORT/League of Resident Theatres. Prior to joining Childsplay, he was Assistant Managing Director at the Alliance Theatre Company in Atlanta, Georgia, and the Managing Director at Virginia Stage Company in Norfolk, Virginia.



# CHILDSPLAY

THEATRE ACADEMY

Register Now!

**SPRING CLASS FOR AGES 4-15 AND  
PRODUCTIONS FOR AGES 8-17!**

You've seen the show, now come learn from the pros! Check out just a few of our youth programs this spring:



**ZOOSICAL, FUTURE  
FILMMAKERS,  
IMPROVMANIA:**

Saturday class for ages  
4-6, 6-9, and 8-13.



**SHREK TALES  
WEDNESDAY NIGHT  
PRODUCTION CLASS:**

(Ages 8-15)



Full-scale play production for teens.  
Auditions in **March**.

**REGISTER NOW! [CHILDSPLAYAZ.ORG/CLASSES](http://CHILDSPLAYAZ.ORG/CLASSES)**



*“One of the underlying core values of Childsplay is the notion of ensemble. There is a resident group of theatre artists (our Associate Artists) who, in collaboration with the Artistic Director, are responsible for planning and creating the artistic products that illustrate Childsplay’s mission. But these artists do not create in isolation. Everyone who works at Childsplay—other artists, technicians, educators, administrators and trustees—is a part of this resident ensemble. This mindset guides the way our work is created, the way it is marketed and the way it is delivered. Ideally, all of these individuals are housed under one roof, allowing for the free and open exchange of ideas and opinions.” —Childsplay’s Strategic Plan 2012*

**Dwayne Hartford** .....Artistic Director  
**Steve Martin**.....Managing Director  
**Jenny Millinger** .....Associate Artistic Director  
**Ricky Araiza**.....Associate Artistic Director  
**David P. Saar** .....Founder & Artistic Director Emeritus

### ADMINISTRATION

Ellen Conn, *General Manager*  
Emily Hopfauf, *Bookkeeper*  
Lindsey Howard, *Office Manager*  
Greg Estrada, *Custodian*  
Dawn Brown, *Finance Consultant*  
Molly Miller, *Office Volunteer*

### ASSOCIATE ARTISTS

Katie McFadzen, *Associate Artist*  
Debra K. Stevens, *Associate Artist*  
Jon Gentry, *Associate Artist*  
José Cruz González, *Artist-in-Residence*

### COMMUNITY ENGAGEMENT

Brianna Fallon, *Academy Manager*  
Thomas Underdal, *Academy Associate*  
Averi Gutierrez, *Director of Marketing & Media*  
Megan Mayo, *Marketing & Media Associate*  
Katie Brantley, *Director of Education  
& School Programs*  
Jen Gantwerker, *Education Program Manager*  
Jacqui Castillo, *School Relationship & Booking  
Coordinator*  
Sonia Rodriguez Wood, *School Performance  
Booking Associate*  
Ernesto Ortiz, *Director of Development*  
Karen Peirce, *Development Associate*  
Jodie Weiss, *Events & Volunteer Manager*  
MaryLisa McKallor, *Education & Development  
Associate*

Jane Gerke, *Company Graphic Artist*  
Kaitlyn Palmer, *Program Graphic Artist*  
Tim Trumble, *Company Photographer*

### COSTUMES & WARDROBE

Gail Wolfenden-Steib, *Costuming  
& Wardrobe Director*  
Emma Jackson, *Wardrobe Supervisor/Stitcher*

### PRODUCTION & STAGE MANAGEMENT

Calvin Legassie, *Production Manager*  
Phoenix Jacob, *Resident Stage Manager*  
Kalie Hagen, *Stage Manager*  
Sarah Ayers, *Assistant Stage Manager*  
Dan Cocca, *Stage Crew*

### SCENERY & PROPERTIES

Montana Thompson, *Master Carpenter*  
Joel Segraves, *Properties Master*  
Johnny Pickett, *Technical Director*

### LIGHTING

Bret Reese, *Master Electrician*

### SOUND

Kenseye Fort, *Sound Supervisor*

### ASL INTERPRETERS

Judy Robbins  
Dawn Schoenberger

(Continued)



**COMING SOON**

The **Hula-Hoopin'  
Queen**



**WEEKENDS AT HERBERGER THEATRE CENTER**

**April 29, 2023 - May 21, 2023**

Tickets: [www.childsplayaz.org](http://www.childsplayaz.org)

# ASK AN ACTOR!

We asked the cast from *Rudolph The Red-Nosed Reindeer*:

## What is something from the holidays that makes you feel nostalgic?

### Here's what they said:

**Issie:** “Something from the holidays that makes me feel nostalgic is the music. Once you start hearing Christmas music in stores, you know it’s time to start buying gifts!”

**Brandon:** “Something that always makes me feel nostalgic around the holidays is taking some warm drinks and going out to look at Christmas lights with my family.”

**Debra K:** “I think something that makes me nostalgic is remembering all of the rituals and traditions my family had when we were all able to be together—decorating the tree and dancing, eating my sister’s homemade cinnamon bread on Christmas Eve, and a very silly rendition of ‘Sleigh Ride’ by Steve Lawrence and Eydie Gorme horribly lip-synched by my brother and me!”

**Jon:** “The Christmas Stocking, is one of my favorite parts, as my mom was really good at finding things and stuffing a HUGE amount of stuff in our small felt and glitter stockings (that had been made by a old lady who was on my dad’s mail route).I always make sure I have one(even when I fill it myself) no matter where I land on Christmas day.”





**Katie:** “Holiday nostalgia? I could write an entire essay! But here’s a brief list: The smell of the live Christmas tree and evergreen scented candles, my mom’s pecan cookies (we would sneak these out of the special ‘for guests only’ Tupperware container when she wasn’t looking), and the vintage lights and ornaments that went on the tree year after year. AND of course, watching Rudolph on TV every year!”

**Luz:** “Driving around looking at lights and then falling asleep to Christmas music playing on the radio.”

**Ryan:** “One of my favorite nostalgic endeavors to indulge in during the holidays is listening to old Christmas CDs. When I was little, I used to listen to Christmas music all night in order to fall asleep, so it will always have a special place in my heart.”

**Tommy:** “Definitely the lights! As a kid, we would drive around the neighborhoods and take in all the beautiful lights and decorations. And if it snowed that day, they would look magical! I am very excited to take my own kid out to look at holiday decorations this year.”



## CHILDSPLAY COMPANY AND STAFF *(Continued)*

### 2022-2023 ACTING COMPANY

Amanda Lopez-Castillo  
Beau Heckman

Brandon Brown  
Carlos Sanchez Beltran  
Debra K. Stevens  
Frederick Alphonso

Hamblet Lemus  
Izabella Montes  
Jillian Sainz  
Jon Gentry  
Katie McFadzen

Lillie Richardson  
Luz Navarro  
Melissa Gonzalez  
Ryan Ardelt  
Thomas Strawser

### 2022-2023 TEACHING ARTISTS

Alejandro Bastien Olvera  
Alex Frost  
Alexis Nomorosa  
Alli St. John  
Amanda Slade

Becca Levy  
Briannah Simmons  
Cam Blackwell  
Cam Oakes  
Christina McSheffrey  
Clara Kundin  
Dan Stoddard  
Dorian Peterson  
Emily Burritt

Ericca Rose  
Jason White  
Jen Gantwerker  
Kim Manning  
Lillie Richardson  
Mary Ellen Loose  
Mitchell Glass  
Natalie Earley  
Nickela Rooney

Rachel McCabe  
Sarah Chanis  
Sarah Dolens-Moon  
Sean Medlin  
Stephanie Clark  
Thomas Underdal  
Zoe Tyler



480-921-5700 | [CHILDSPLAYAZ.ORG](http://CHILDSPLAYAZ.ORG)

- › Childsplay, founded in 1977, is a non-profit professional theatre company of adult actors, teaching and performing for young audiences and families.
- › Childsplay's mission is to ***“Create theatre so strikingly original in form, content or both that it instills in young people an enduring awe, love and respect for the medium, thus preserving imagination and wonder, those hallmarks of childhood that are the keys to the future.”***
- › Childsplay launched its first national tour in 2007, with *Tomás and the Library Lady*. Since then the company has completed 10 more national tours throughout the United States and Canada. Next season, Childsplay will send *Tomás and the Library Lady* out on its third national tour!
- › Childsplay's administrative offices, classrooms, rehearsal halls, prop and costume shops are located in the Sybil B. Harrington Campus for Imagination and Wonder at Mitchell Park, 900 S. Mitchell Drive, in Tempe.
- › Childsplay is a constituent of Arizona Citizens for the Arts, East Valley Partnership, Theatre Communications Group (TCG), the national organization for American theatre; TYA/USA, the US Chapter of ASSITEJ, the international organization for theatre for young audiences; the Tempe Chamber of Commerce; the Hispanic Chamber of Commerce, Alliance of Arizona Non-Profits; and the American Alliance for Theatre and Education (AATE)

# THE SOCIETY FOR IMAGINATION AND WONDER

*The Society for Imagination and Wonder honors those who have made a significant investment to Childsplay and in supporting the leaders of the future. Thank you for helping us share imagination, wonder and joy with children of all ages.*

## SOCIETY FOR IMAGINATION AND WONDER LIFETIME MEMBERS

*Childsplay gratefully acknowledges our Lifetime Members, who have made cumulative gifts of \$20,000 or more as of August 31, 2022.*

*\*Indicates Annual Society Membership as well*

### **VISIONARY: \$2,000,000 & ABOVE**

Sybil B. Harrington Trust  
Virginia G. Piper Charitable Trust\*

### **TRANSFORMER: \$1,000,000 & ABOVE**

City of Tempe\*  
US Department of Education

### **INNOVATOR: \$500,000 AND ABOVE**

Arizona Commission on the Arts\*  
The Kemper and Ethel Marley Foundation  
Flinn Foundation\*  
Shubert Foundation\*  
Target  
The Steele Foundation\*

### **ENERGIZER: \$250,000 & ABOVE**

American Airlines  
APS\*  
BHHS Legacy Foundation\*  
Carol Critchfield Foundation  
Carol DuVal Whiteman  
Doris Duke Charitable Foundation\*  
Helios Education Foundation  
J.W. Kieckhefer Foundation\*  
Margaret T. Morris Foundation\*  
Nina Mason Pulliam Charitable Trust  
Phoenix Office of Arts and Culture\*  
Salt River Project\*  
Billie Jo Herberger\*  
Thunderbirds Charities\*  
Wells Fargo Bank

### **ORIGINATOR: \$100,000 & ABOVE**

American Express  
Arizona Community Foundation\*  
Arizona Republic\*  
The Boeing Company

Shelley Cohn and Mollie C. Trivers\*  
Joanie Flatt\*  
Freeport-McMoRan Copper and Gold  
Giggling Gwen Foundation, in loving  
memory of Gwen Van Kirk  
Anonymous  
Lisa and William Hobson\*  
Michael Flatt  
National Endowment for the Arts\*  
Scottsdale Arts\*  
The Hearst Foundation  
Theatre Communications Group  
Whiteman Foundation

### **PIONEER: \$50,000 & ABOVE**

Alliance Bank of Arizona  
Anonymous\*  
John Back and Diane Haas\*  
Roxana and Dean Bacon  
Banner Health, Cardon Children's Medical  
Center  
Blue Cross Blue Shield of Arizona  
CBS 5 AZ KPHO  
CALA Alliance  
Child Abuse Prevention License Plate  
Program  
Eliot Spalding Foundation\*  
LeRoy and Kate Ellison  
Ardie and Stephen Evans\*  
Susan and Rich Goldsmith\*  
Hazel Hare  
JP Morgan Chase  
Kelly and Raymond Leppien\*  
Lewis Roca Rothgerber Christie LLP  
Dr. Cheryl Mandala\*  
Maricopa Partnership for Arts and Culture  
Mercy Care\*  
Neavitt/Thomas Endowment Fund\*  
Dan O'Neill and Jenny Lucier

*(Continued)*

## SOCIETY FOR IMAGINATION AND WONDER LIFETIME MEMBERS

### **PIONEER: \$50,000 & ABOVE** *(Continued)*

Linda Pulaski\*  
David and Sonja Saar\*  
Carol and Randy Schilling  
Snell & Wilmer\*  
Tim Thomason

### **DEVELOPER: \$35,000 & ABOVE**

Rebecca and Bill Akins\*  
Barbara and John Bebbiling  
Marcia and Matthew Benjamin\*  
Susan Brekke  
Jim and Julie Copenhaver  
Dora and Louis Fox Charitable Trust\*  
The Dorrance Family Foundation  
Fennemore Craig  
Fiesta Bowl Charities  
Friends of Tempe Center for the Arts\*  
Jane A. and Alan G. Lehman Foundation\*  
James and Debra Larson\*  
Alan Longfellow  
Ann and Fred Lynn  
Macy's Foundation  
Steve Martin\*  
Anonymous\*  
Karen Majestic Powell and Bill Powell\*  
Caleb Reese\*  
Nelson Ross\*  
Scottsdale League for the Arts  
Ann Stanton and Bob Haddock\*  
Thrivent Financial\*  
Twiford Foundation

### **PROMOTER: \$20,000 & ABOVE**

Arizona Diamondbacks Foundation  
Katherine Badrick and Sharad Desai\*  
Bank of Arizona  
Trevor Barger  
Daron and Ron Barness Family Foundation  
Amy and Travis Beeman\*  
Jenice and John Benton  
BMO Harris Bank  
Carstens Family Funds  
City of Peoria\*  
Claude and Susan Case  
Casino Arizona & Talking Stick Resort  
Cox Charities  
Creative Capital Foundation/MAP Fund  
Leslie Dashew and Jack Salisbury\*  
Betty Drake  
Ellis Education Fund / Arizona Community

Foundation  
Tim and Susie Ernst\*  
Christine Ewing  
First Things First  
Gail Fisher and Mel Kessler\*  
David L. Kest and Robert "Sandy"  
Chamberlain  
Catherine Foley  
Gaylord and Erika Gagnon\*  
Gesner-Johnson Family Foundation  
Glendale Arts Commission\*  
Dwayne Hartford\*  
Drs. Jeanne Hokin Wills and J. Robert Wills  
Lisa Coulter Hyland and Timothy Hyland\*  
Nathan Joseph\*  
KPMG LLP  
Lynne Lagarde and Robert Stankus\*  
Sally and Richard Lehmann  
Stephanie Machen  
Maricopa County\*  
Laurie McWeeney  
Medtronic Foundation  
Mary Ann Miller  
Jenny Millinger  
Myra Millinger\*  
Molly Blank Fund\*  
National Bank of Arizona  
Phoenix Suns Charities  
Resolution Copper  
Norman and Pam Saba  
C. Angus Schaal  
Scottsdale Insurance Company/Nationwide  
Insurance Foundation  
The Stocker Foundation  
Nancy and Michael Stone  
Elden Strahm  
Nancy Swortzell  
Elizabeth True and Dan Bloomfield\*  
Tucson-Pima Arts Council  
Rosenlund Family Foundation  
Jennifer and Mike Van Kirk  
Keith and Debra Wells  
WESTAF  
Rick and Vicki Williams  
Lin and Jim Wright

---

## SOCIETY FOR IMAGINATION AND WONDER ANNUAL MEMBERS

*Childsplay gratefully acknowledges our Annual Members, who have contributed annual gifts of \$1,000 or more as of August 31, 2022.*

### **ADVENTURER: \$5,000 AND ABOVE**

Rebecca and Bill Akins  
Arizona Community Foundation  
Katherine Badrick and Sharad Desai  
Marcia and Matthew Benjamin  
Elizabeth True and Dan Bloomfield  
Shelley Cohn and Mollie C. Trivers  
Leslie Dashew and Jack Salisbury  
Ingrid Ellis, in memory of Thomas Gordon  
Bossung  
Joanie Flatt  
Flinn Foundation  
Dora and Louis Fox Charitable Trust  
Friends of Tempe Center for the Arts  
Susan and Rich Goldsmith  
Jane A. and Alan G. Lehman Foundation  
Dr. Cheryl Mandala  
Neavitt/Thomas Endowment Fund  
Karen Majestic Powell and Bill Powell, in honor of their first grandchildren, River & Margo  
Caleb Reese  
Shubert Foundation  
The Alanko Family Foundation  
Thrivent Financial

### **EXPLORER: \$2,500 AND ABOVE**

Amy and Travis Beeman  
Ardie and Steve Evans  
Jeffrey Breck Guldner  
Lisa and William Hobson  
Wendy Feldman Kerr  
Linda Reidenbach  
Nelson Ross  
Joey Trahan

### **STORYTELLER: \$1,000 AND ABOVE**

AtLee Family Foundation  
John Back and Diane Haas  
Cynthia and Rob Baker  
Karen and Daniel Barr  
Shirley Hawley and Bill Blair  
Jill and David Bray  
Carol J. Christine  
Tasha Cycholl and Josh Rubin  
Tim and Susie Ernst  
Michele and Matthew Feeney

Gail Fisher and Mel Kessler  
Ronda Fisk  
Connie Furr and Michael Soloman  
Rebecca and David Gaspar  
Gaylord and Erika Gagnon  
Jeff and Erin Goodman  
Dwayne Hartford  
Hon-Dah Resort Casino  
Lisa Coulter Hyland and Timothy Hyland  
Kate and Kurt Janson  
David Jazo  
Nathan Joseph  
Joy E. Kranzusch  
Lynne Lagarde and Robert Stankus  
James and Debra Larson  
Philip and Ellen Leavitt  
Kelly and Raymond Leppien  
Jane Martin  
Steve Martin  
Carol and Dave Mattson  
Paul and Amy Mescher  
Myra Millinger  
Kathleen Moroz  
Sandra and Joseph Palais  
Molly Lajoie Plutnicki and Ryan Plutnicki  
Tiffany and Miles Pondelik  
Linda Pulaski  
Alyza Rathor  
Suzanne Williams Richards and Peter Richards  
David and Sonja Saar  
Ann Stanton and Bob Haddock  
Marsh Taylor  
Joy Tevis  
Linda Thompson  
Betty Van Denburgh  
Linda and Richard Warren  
Susan and Mike Wissink  
Barb and Barry Zemel

## **CHILDSPLAY BOARD OF TRUSTEES 2022-23**

<b>President</b> .....	<b>Matthew Benjamin</b> <i>Community Arts Advocate</i>
<b>Vice President</b> .....	<b>Alison Pulaski Carter</b> <i>BurnsBarton LLP</i>
<b>Secretary</b> .....	<b>Cheryl Mandala</b> <i>Community Arts Advocate</i>
<b>Treasurer</b> .....	<b>Shirley Hawley</b> <i>Community Arts Advocate</i>
<b>Immediate Past President</b> .....	<b>Lisa Coulter</b> <i>Snell &amp; Wilmer</i>

### **MEMBERS**

John Back .....	<i>JVBack &amp; Co. LLC</i>
Travis Beeman.....	<i>KPMG LLP</i>
David Bray .....	<i>Dickinson Wright PLLC</i>
Roseline Cristanelli.....	<i>Reliance First Realty, LLC</i>
Tasha Cycholl.....	<i>Kutak Rock LLP</i>
Sharad Desai.....	<i>Honeywell International</i>
Joanie Flatt .....	<i>Flatt &amp; Associates</i>
Gaylord Gagnon.....	<i>APS</i>
Susan Goldsmith.....	<i>Community Education Advocate</i>
Lisa Hobson .....	<i>Tempe School District (retired)</i>
David Jazo.....	<i>Arizona Bank and Trust</i>
David Kest.....	<i>Community Arts Advocate</i>
Vanessa Kisicki.....	<i>SRP</i>
Alyza Land.....	<i>Jazz Pharmaceuticals</i>
Miles Pondelik .....	<i>Western Alliance Bank</i>
Shirley Hawley.....	<i>Community Arts Advocate</i>
Marcelino Quiñonez .....	<i>ASU Foundation</i>
Linda Reidenbach.....	<i>Thrivent Financial</i>
Nelson Ross.....	<i>Community Arts Advocate</i>
Brendan Ross .....	<i>City of Tempe</i>
Revan McKinnon Rottach.....	<i>Wells Fargo Bank</i>
Heather Stratz.....	<i>Community Arts Advocate</i>
Jennifer Van Kirk.....	<i>Lewis Roca Rothgerber Christie</i>
Susan Wissink.....	<i>Fennemore Craig Dowling Aaron</i>

### **TRUSTEE EMERITUS**

Harry E. Mitchell .....	<i>Former US Congressman</i>
Carol DuVal Whiteman, .....	<i>Community Arts Advocate</i>